

Siniya Island

by Sobha

📍 Umm Al Quwain

4K, 5K, 6K
available

**from 10,6 M
AED**

Down Payment
from

**1 059 233
AED**

Completion

2027

Footage

**from
4814.69 ft²**

4K

10 592 333 — 13 723
768 AED

4814.69—5219.42 ft²

5K

16 663 932 — 20 927
298 AED

7245.18—7413.10 ft²

6K

23 490 296 — 24 126
642 AED

9787.61—9787.61 ft²





Siniya Island

Village

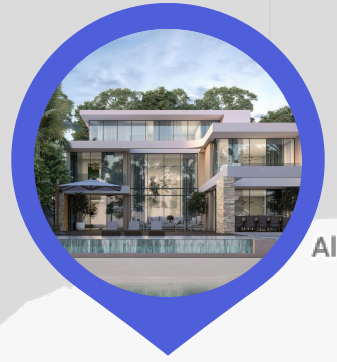
Project Description

Embark on a journey to Siniya Island, a pristine paradise where nature thrives in its purest form, captivating the soul with untouched beauty and serene landscapes. Picture yourself strolling barefoot on soft white sand, listening to the soothing melody of waves as you escape into a sensory oasis unlike any other. At Sobha Siniya Island, luxury seamlessly merges with nature, offering exquisite villas, waterfront mansions, apartments, and resorts set amidst picturesque landscapes.

This timeless sanctuary invites adventurers to uncover hidden treasures within its untouched depths, blending tranquility with the vibrant pulse of UAE's cosmopolitan...



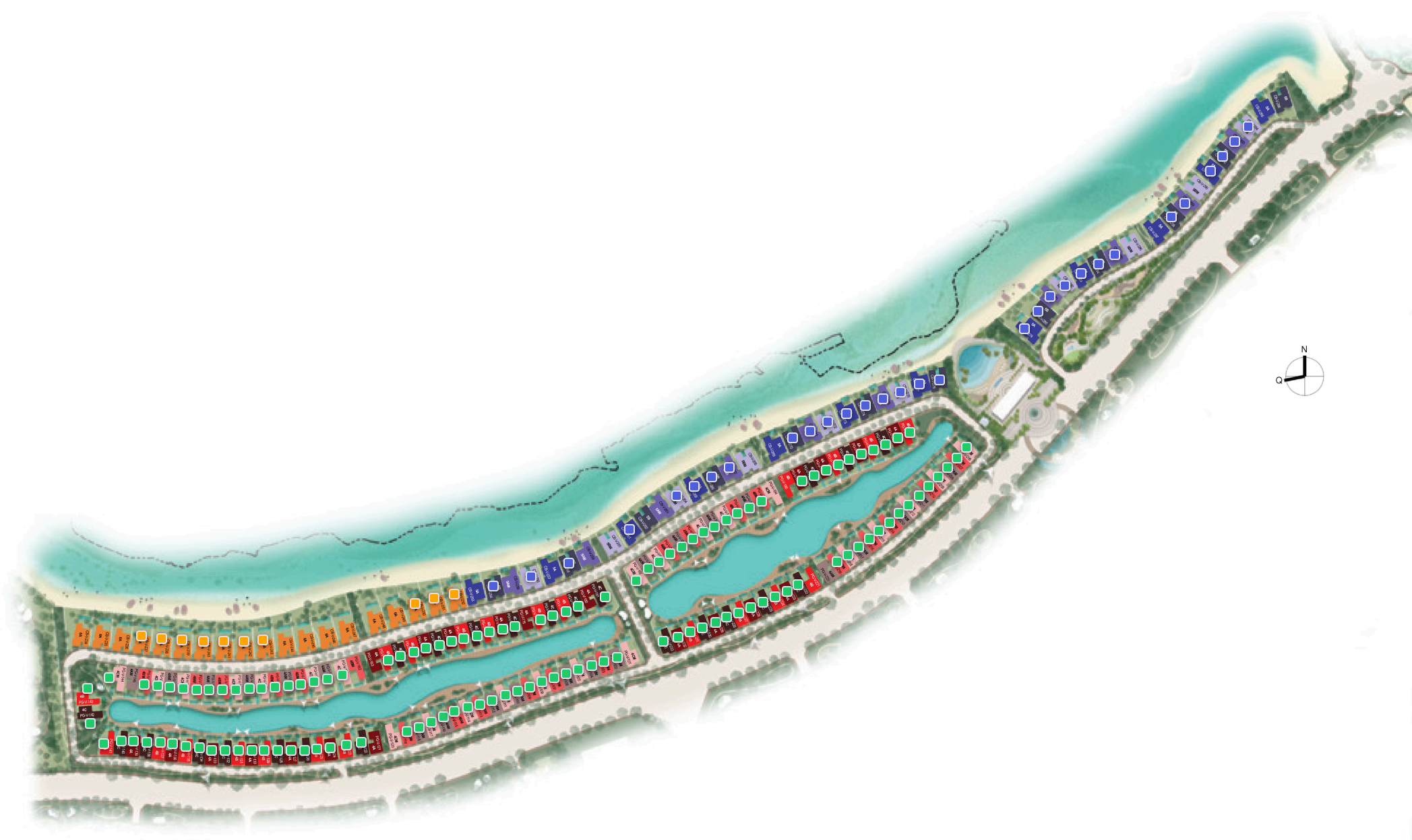
Sobha
Developer



Al Seanneeah
السينية

Siniya Island





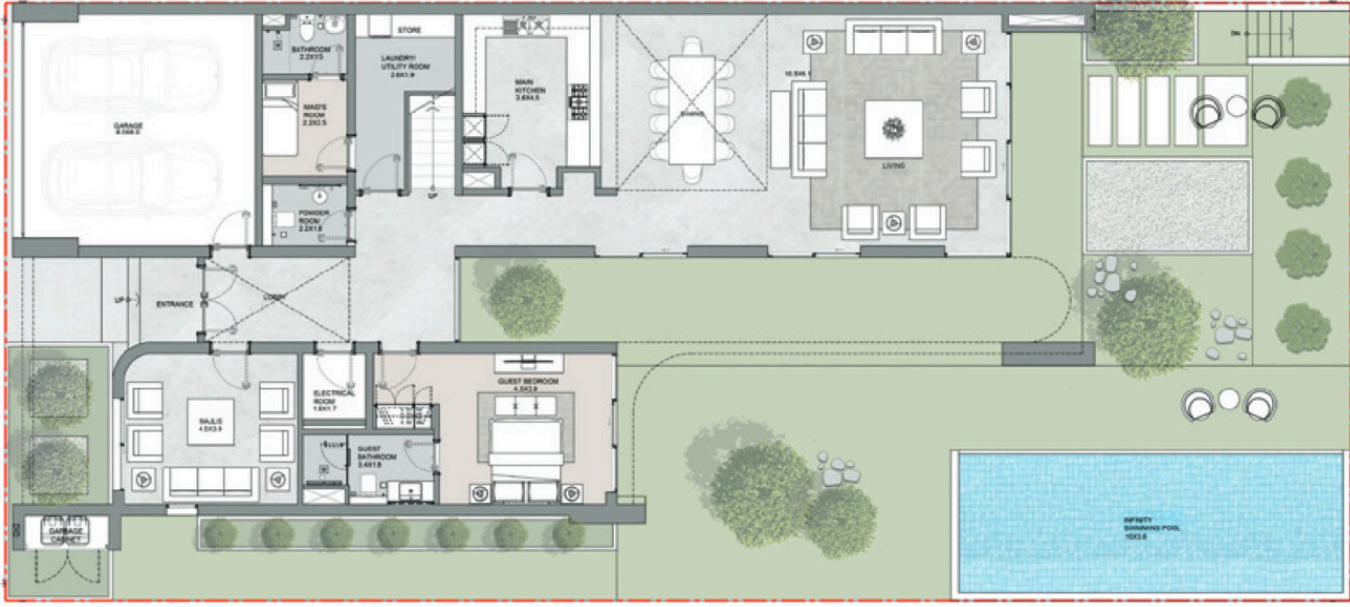
Master Plan

4K
242
FROM 10 592 333 AED
FROM 4814.69 FT²

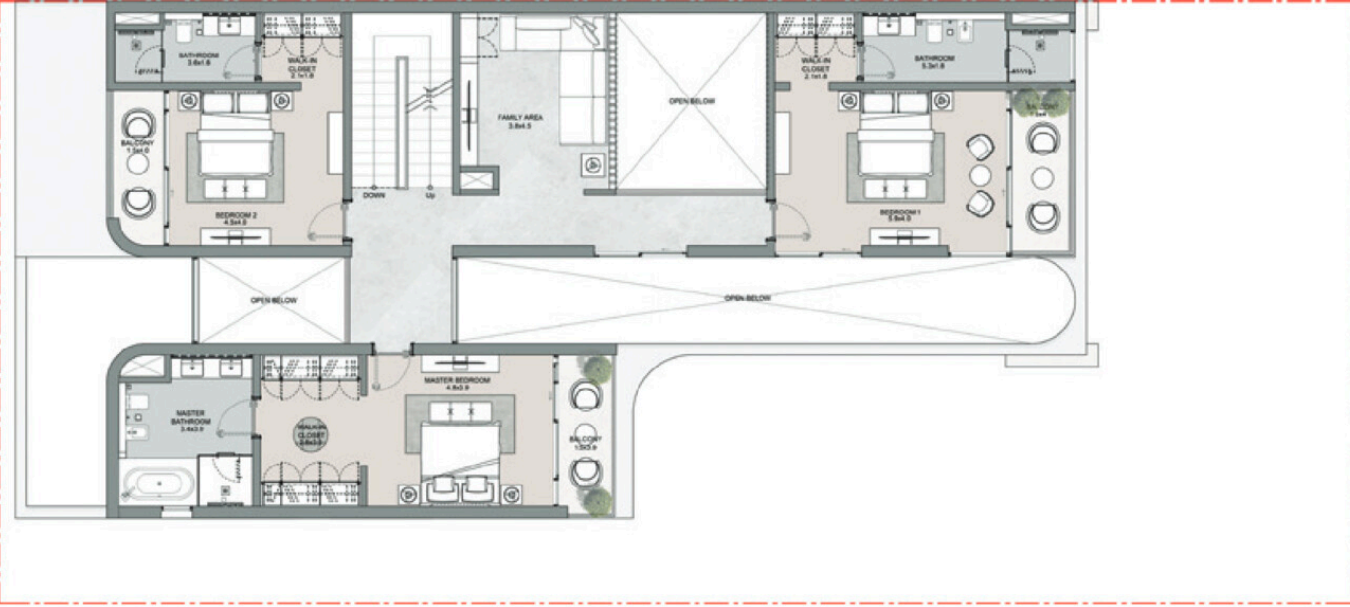
5K
60
FROM 16 663 932 AED
FROM 7245.18 FT²

6K
20
FROM 23 490 296 AED
FROM 9787.61 FT²

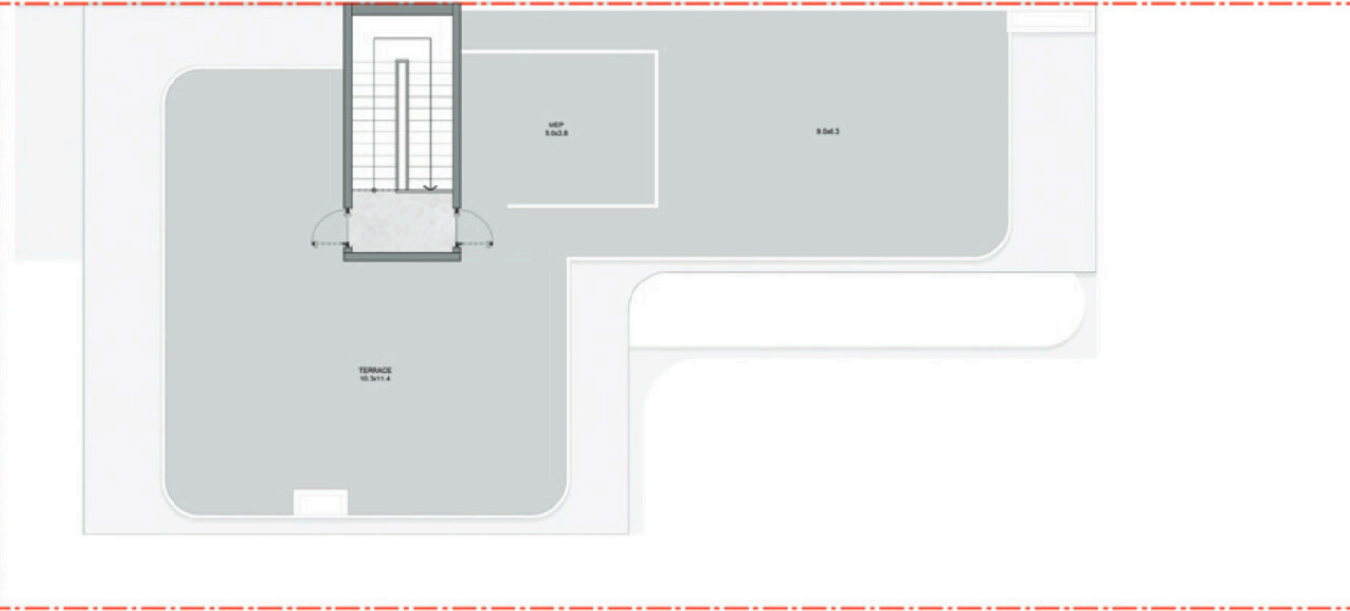
1 LVL



2 LVL



3 LVL



4 Bedroom Villa Type C Mirror

Villa in RC • 21 unit

11 482 724 – 13 031 250 AED



Total S

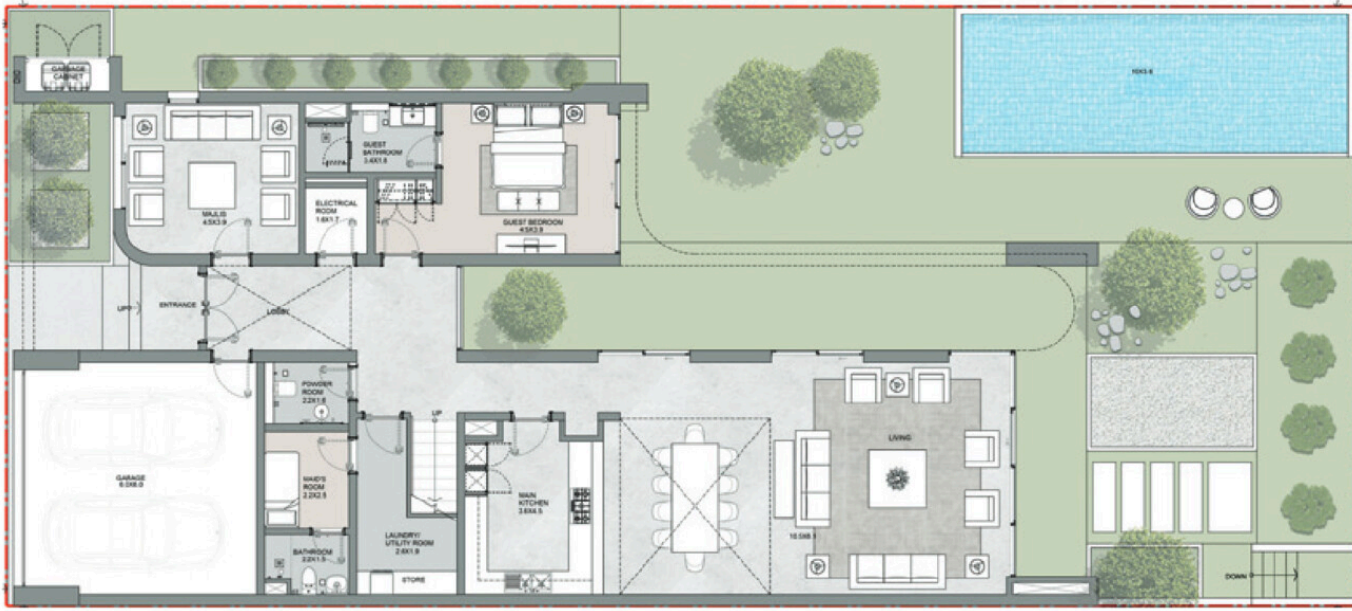
5219.42 ft²



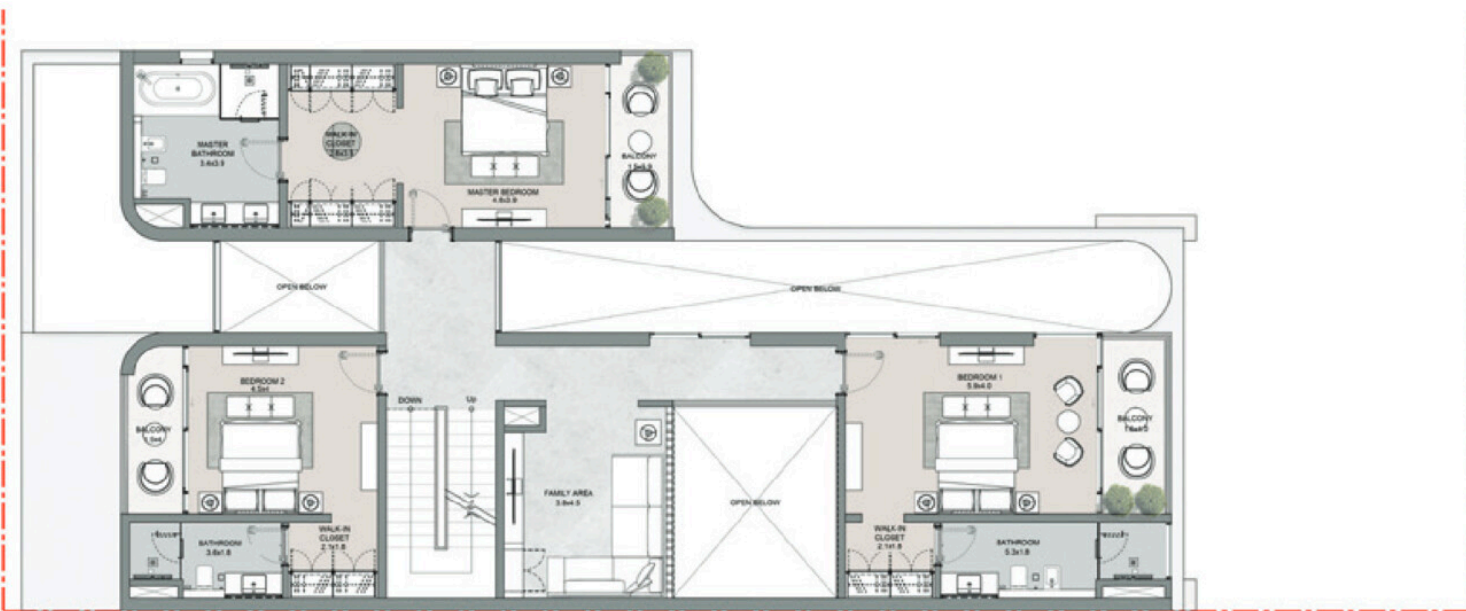
Bedrooms

4 BR

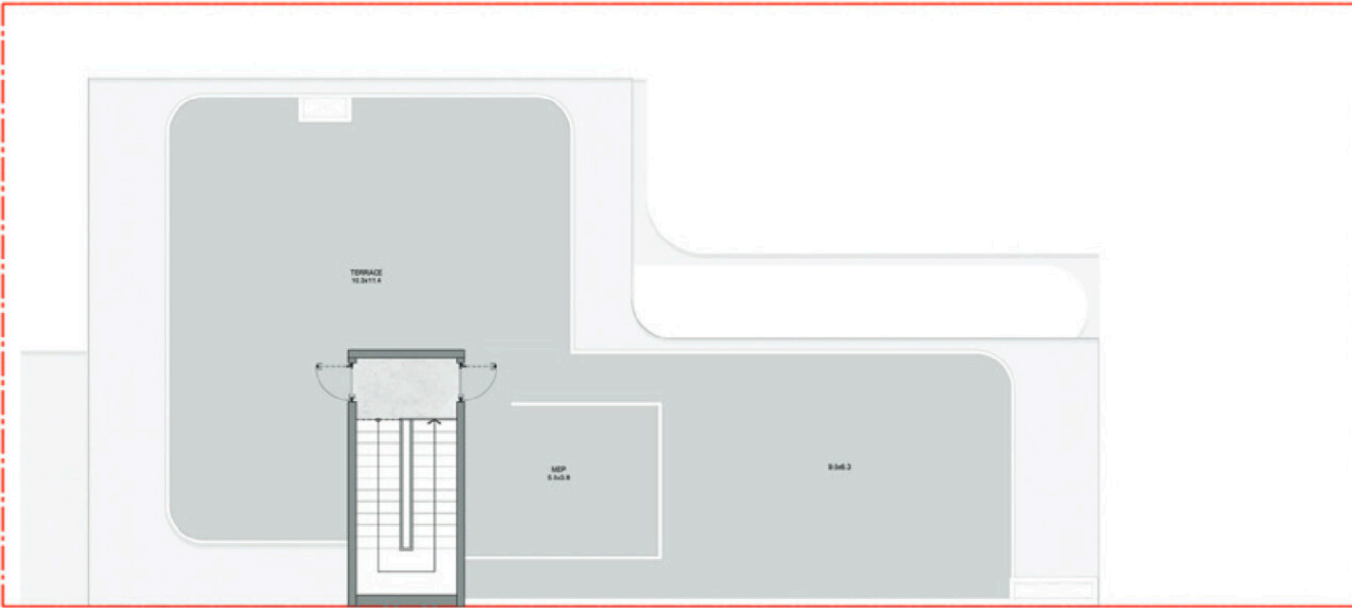
1 LVL



2 LVL



3 LVL



4 Bedroom Villa Type C

Villa in RC • 23 units

11 482 724 – 13 723 768 AED

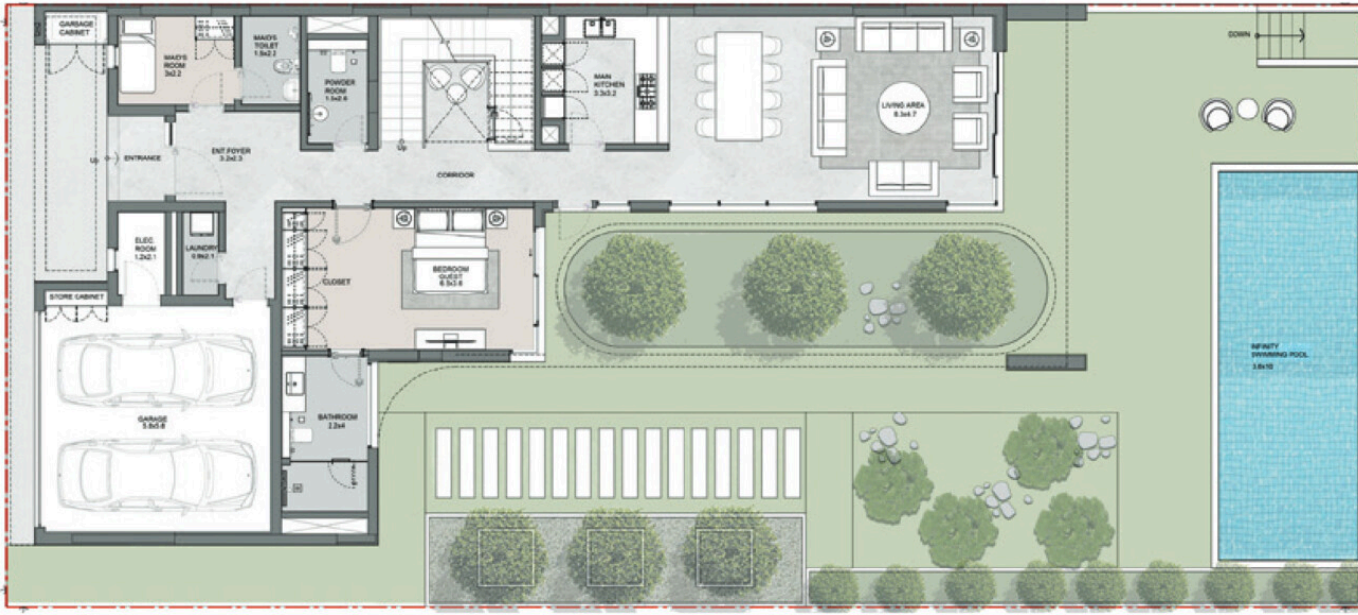


Total S
5219.42 ft²

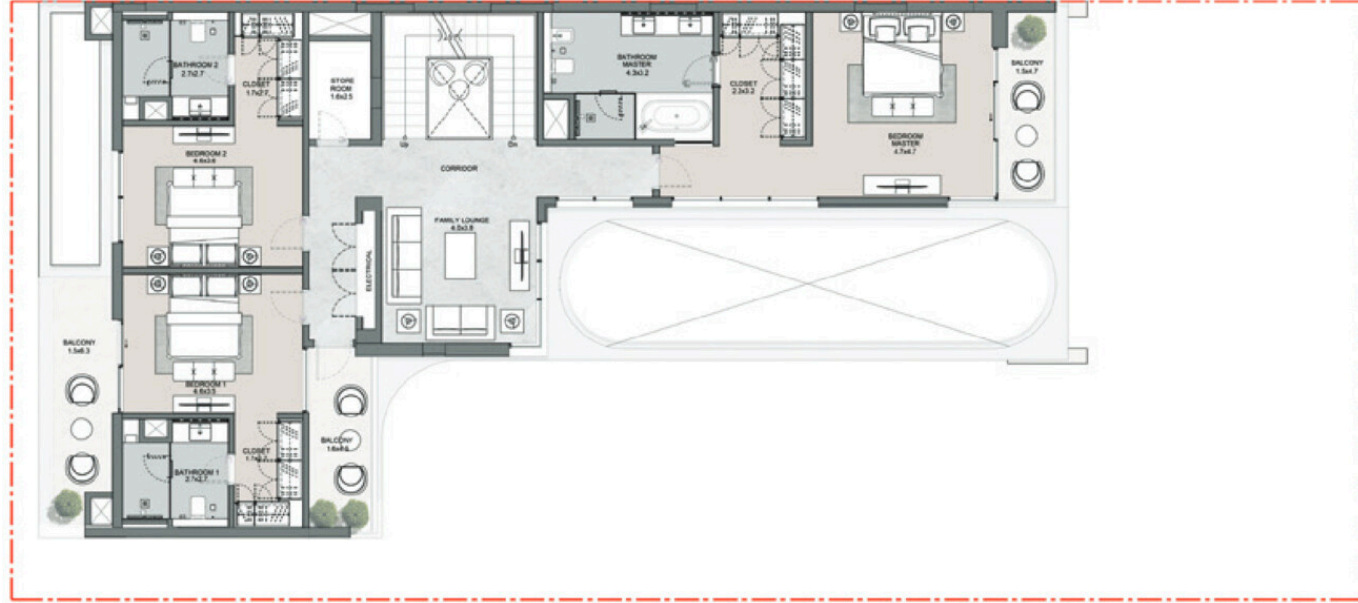


Bedrooms
4 BR

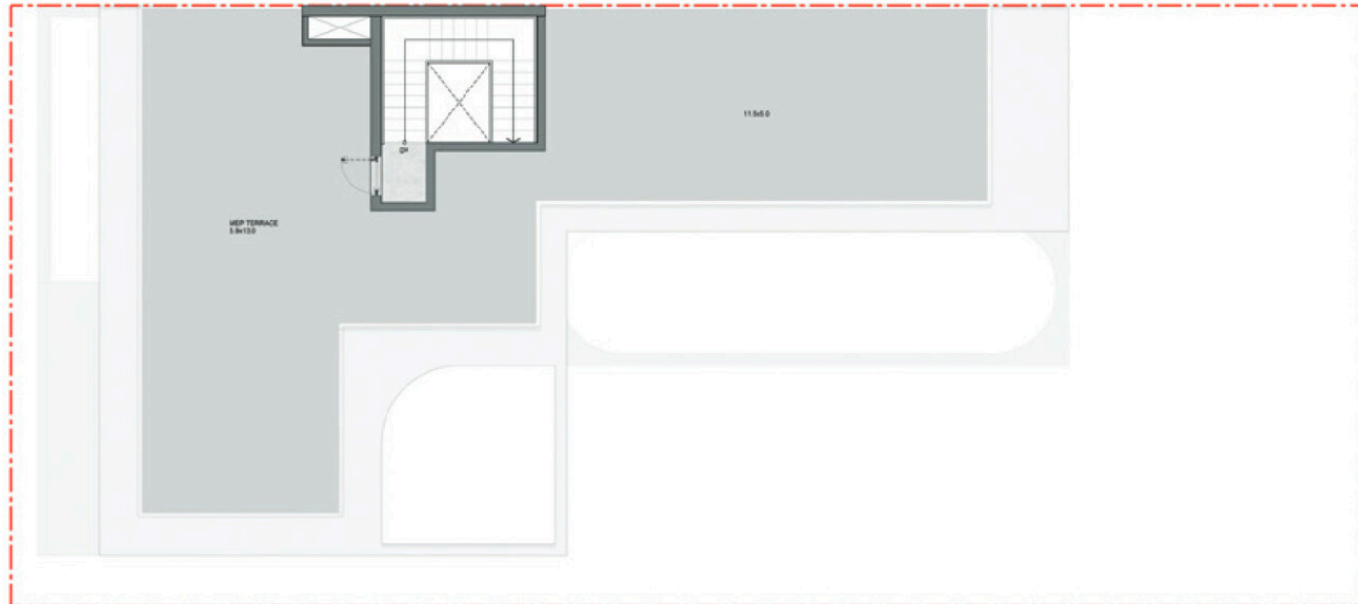
1 LVL



2 LVL



3 LVL



4 Bedroom Villa Type B Mirror

Villa in RC • 20 units

10 639 694 AED



Total S

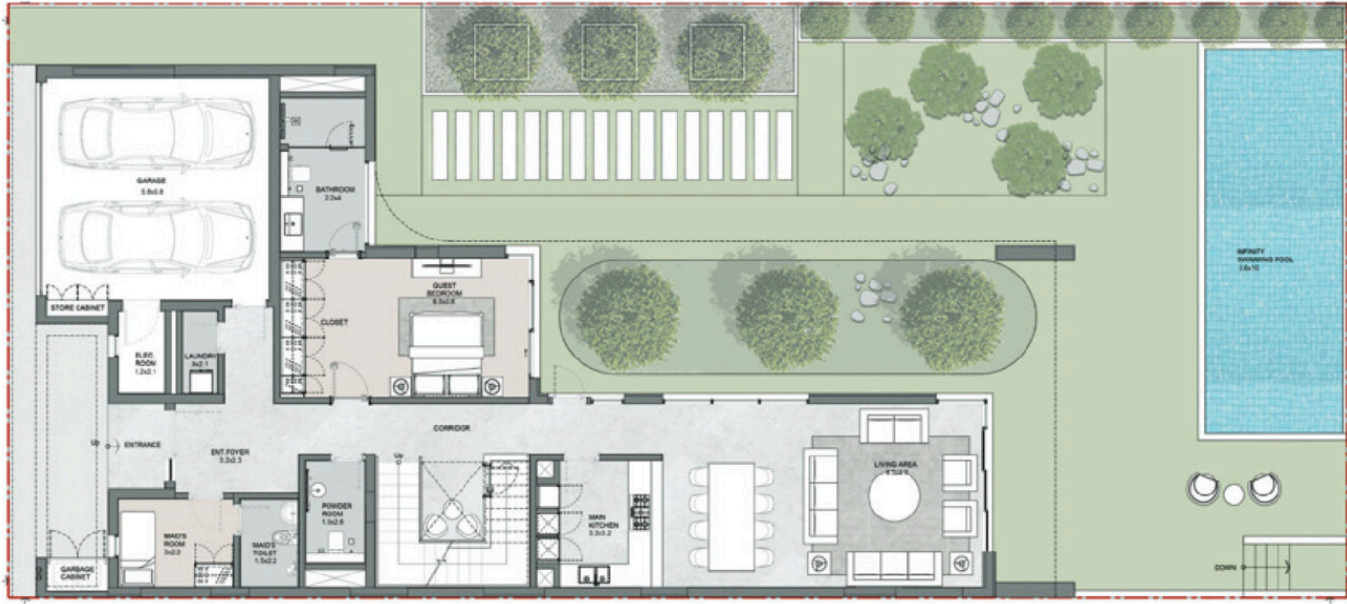
4836.22 ft²



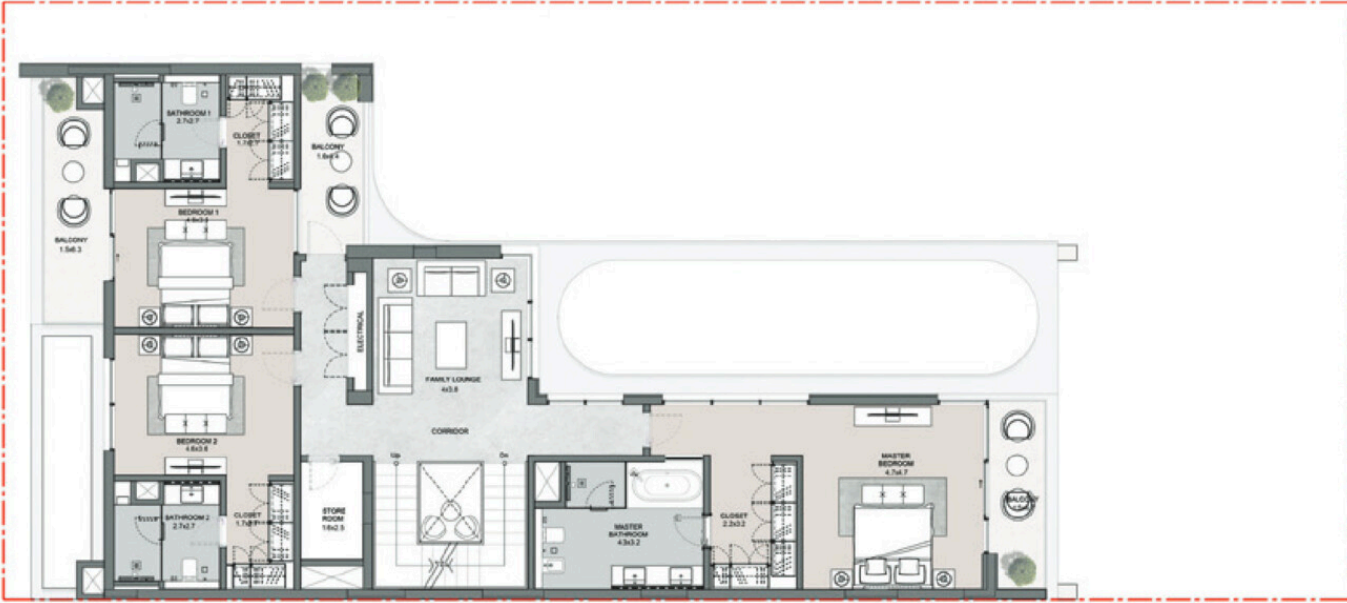
Bedrooms

4 BR

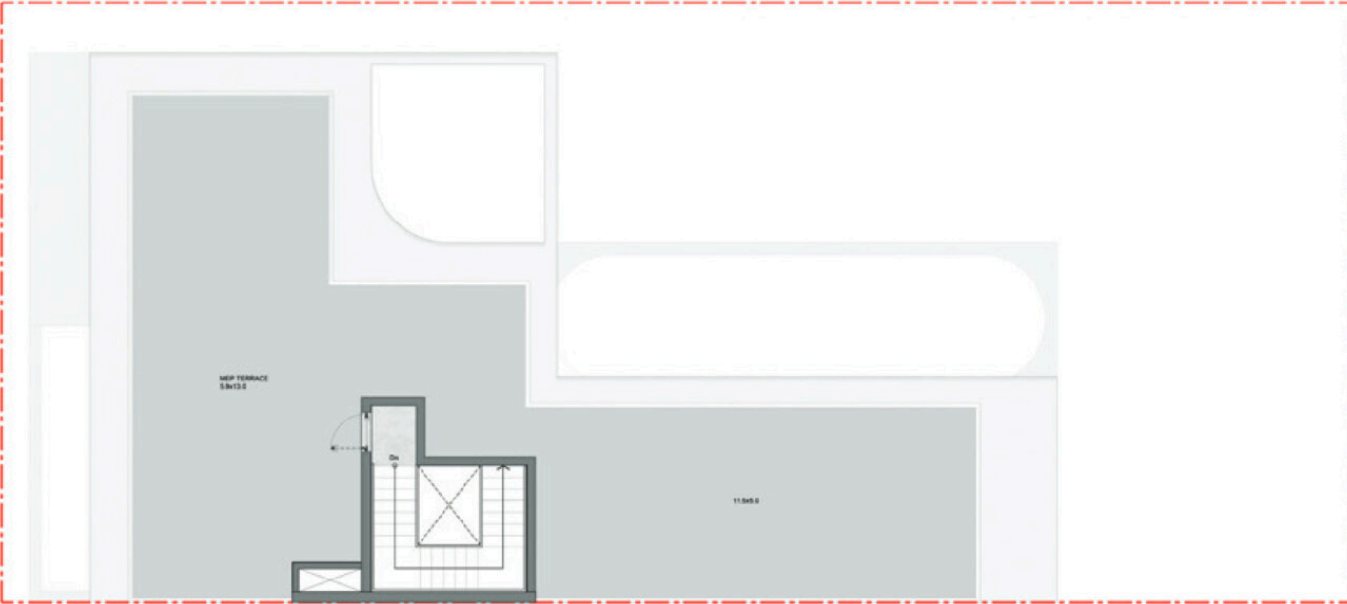
1 LVL



2 LVL



3 LVL



4 Bedroom Villa Type B

Villa in RC • 20 units

10 639 694 — 12 738 651 AED



Total S

4836.22 ft²



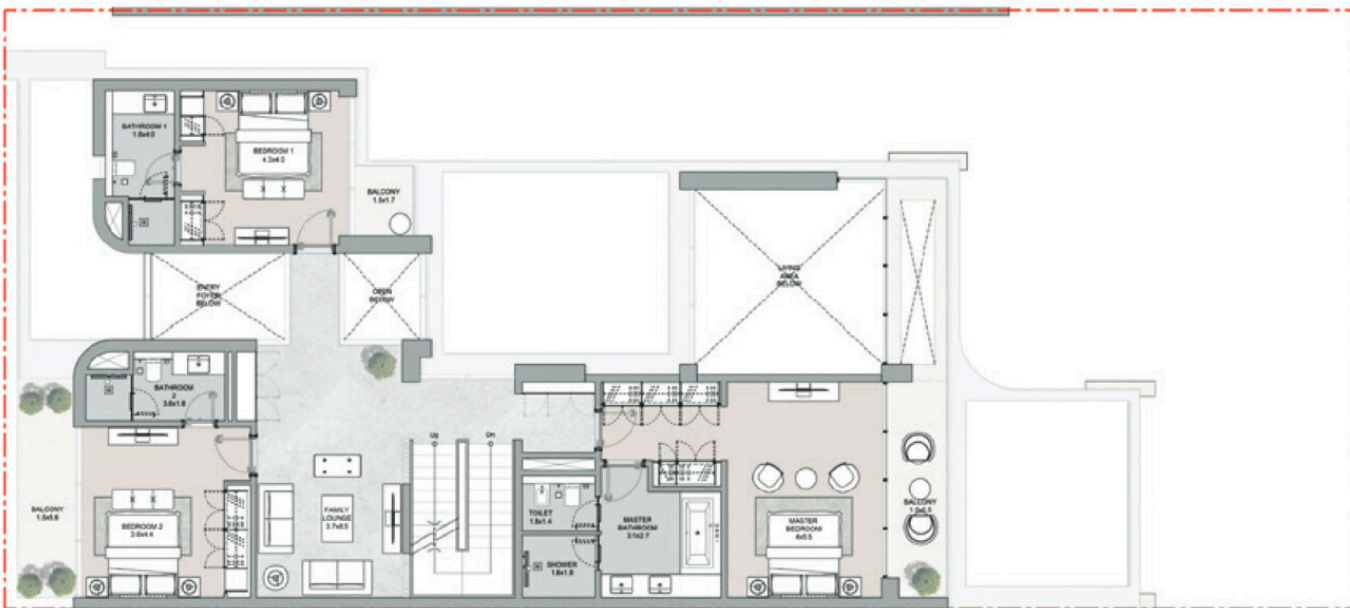
Bedrooms

4 BR

1 LVL



2 LVL



3 LVL



4 Bedroom Villa Type A

Villa in RC • 17 units

10 592 333 — 10 833 068 AED



Total S

4814.69 ft²



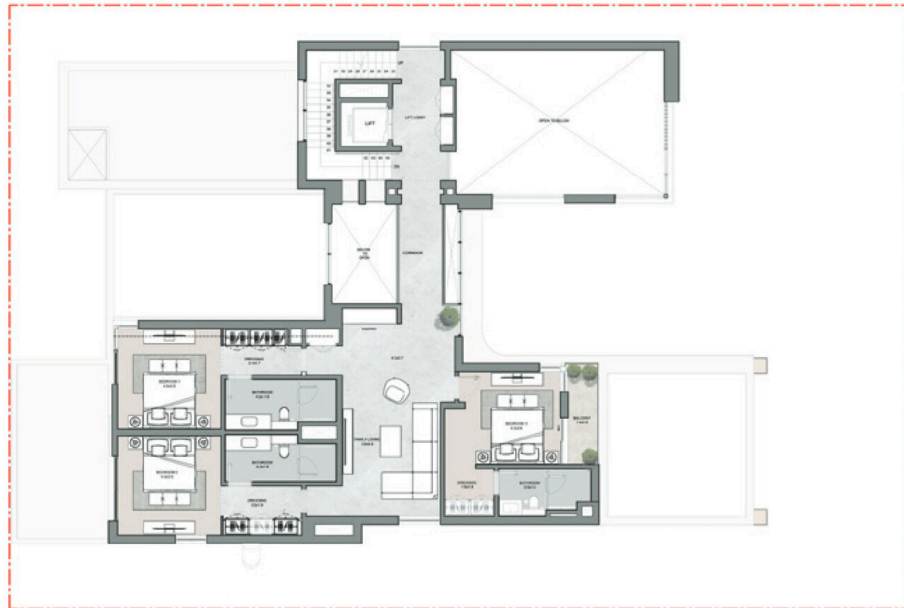
Bedrooms

4 BR

1 LVL



2 LVL



3 LVL



5 Bedroom Villa Type B Mirror

Villa in RC • 6 units

17 050 141 – 17 791 452 AED



Total S

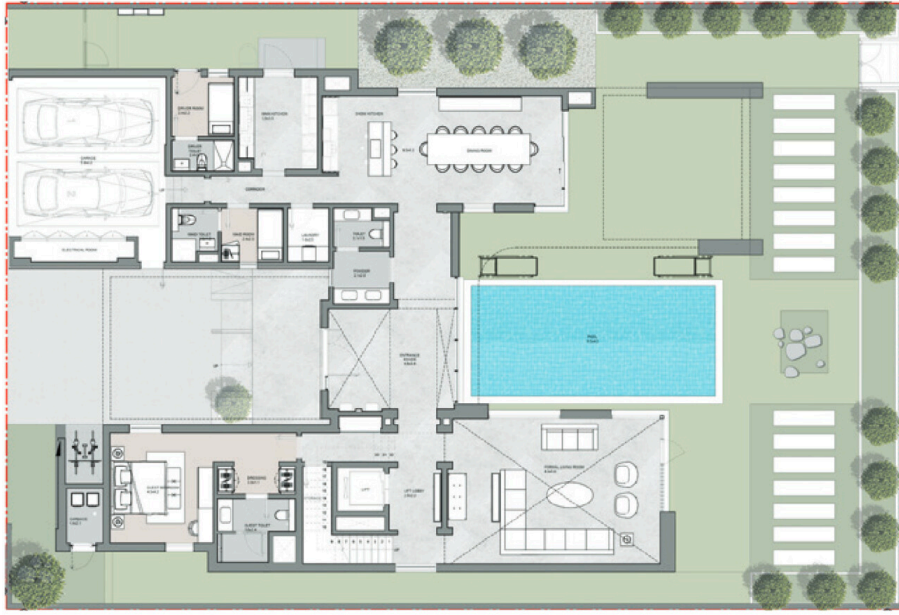
7413.10 ft²



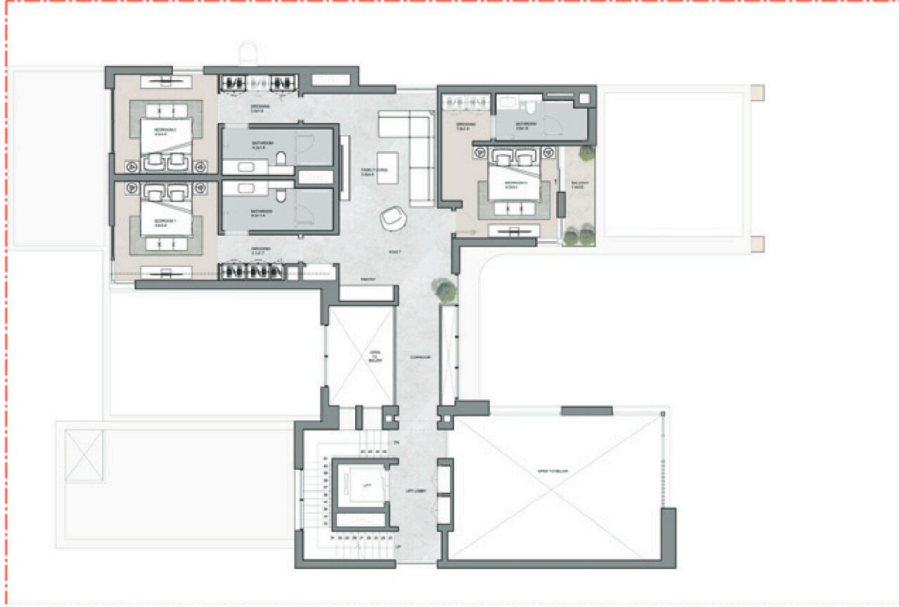
Bedrooms

5 BR

1 LVL



2 LVL



3 LVL



5 Bedroom Villa Type B

Villa in RC • 10 units

17 050 141 – 19 287 349 AED



Total S

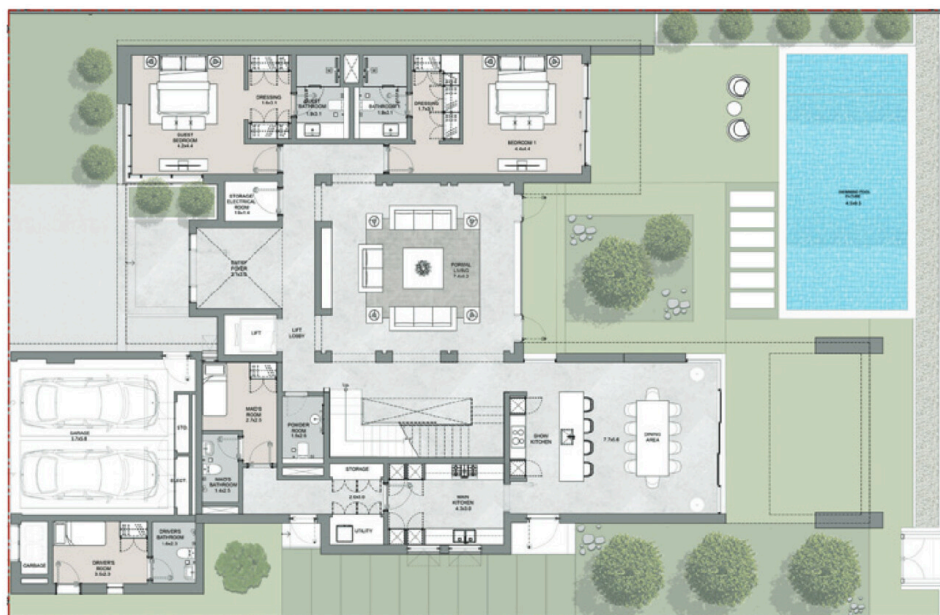
7413.10 ft²



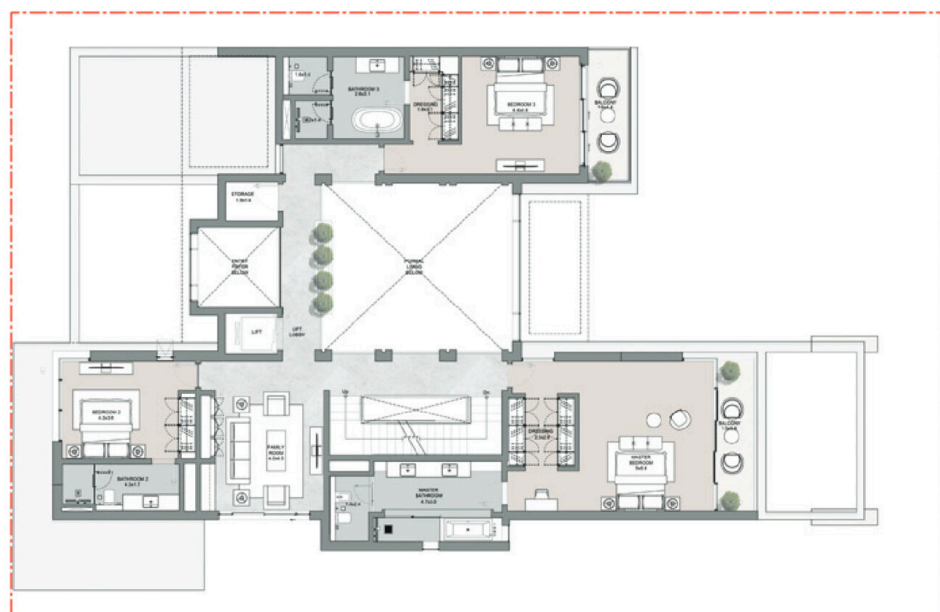
Bedrooms

5 BR

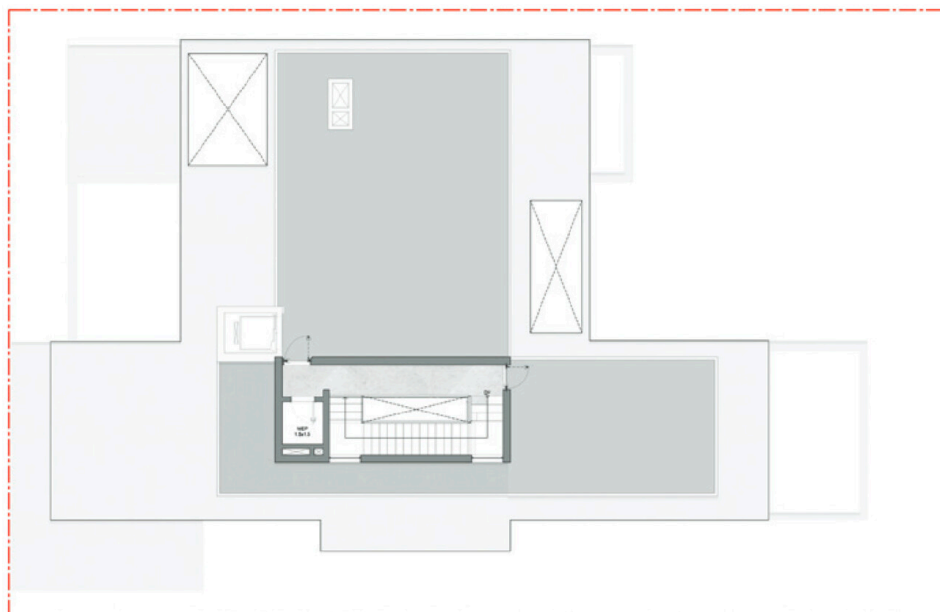
1 LVL



2 LVL



3 LVL



5 Bedroom Villa Type A Mirror

Villa in RC • 7 units

16 663 932 — 17 388 451 AED



Total S

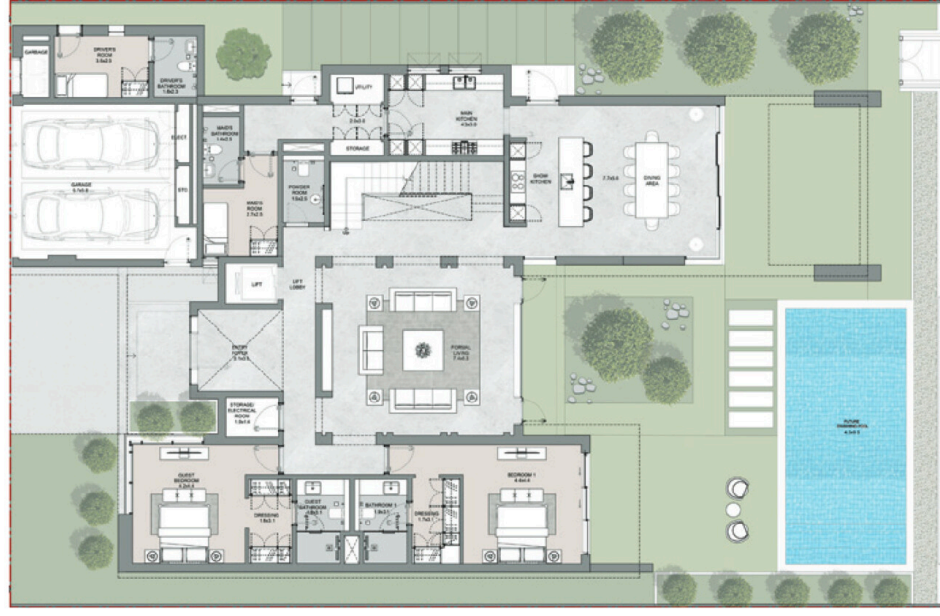
7245.18 ft²



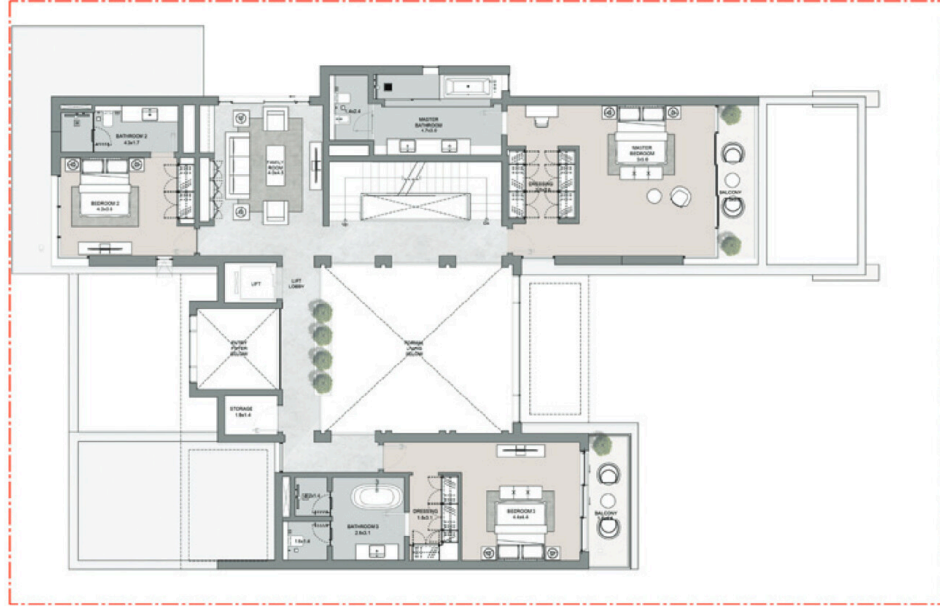
Bedrooms

5 BR

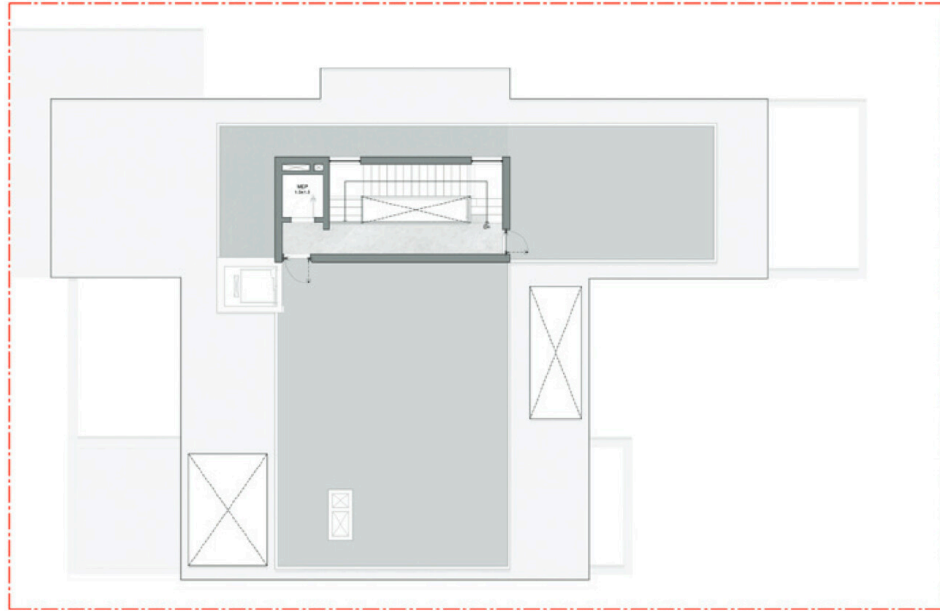
1 LVL



2 LVL



3 LVL



5 Bedroom Villa Type A

Villa in RC • 7 units

16 663 932 — 20 927 298 AED



Total S

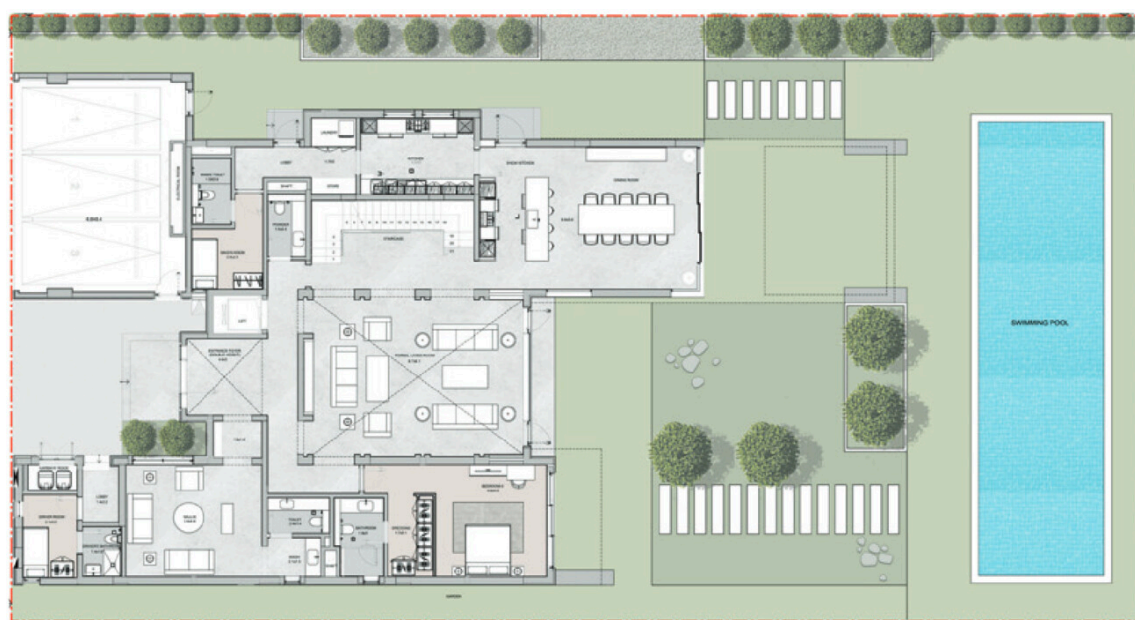
7245.18 ft²



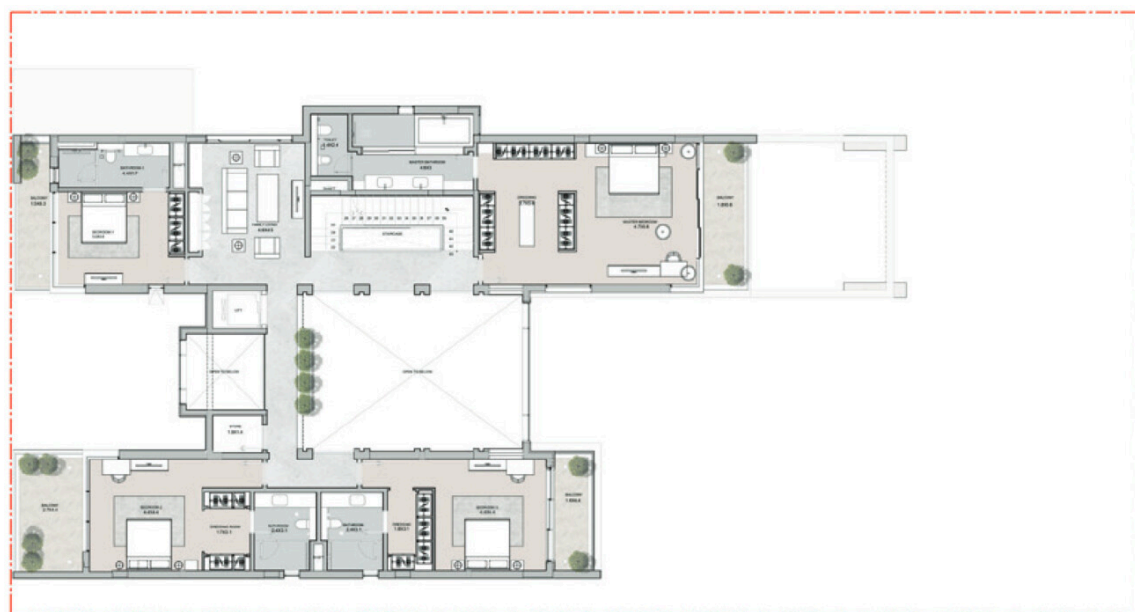
Bedrooms

5 BR

1 LVL



2 LVL



3 LVL



6 Bedroom Villa Type A

Villa in RC • 10 units

23 490 296 — 24 126 642 AED



Total S

9787.61 ft²



Bedrooms

6 BR

Payment plan 60/40



Example

Lets take a look how this payment plan will work with the cheapest unit in this project

4 BR • Villa in RC • 4814.69 ft² • 10 592 333 AED

DOWN PAYMENT	1 059 233 AED
DURING CONSTRUCTION in 5 payments	5 296 167 AED
ON HANDOVER in 1 payment	4 236 933 AED
TOTAL SUM	10 592 333 AED