



Seahaven

by Sobha

📍 Dubai • Marsa Dubai • Dubai Marina • Dubai Harbour

1BR, 2BR, 3BR,
4BR, 5BR, 6BR
available

**from 3,4 M
AED**

Down Payment
from

**815 299
AED**

Completion

2026

Footage

**from 849.27
ft²**

1BR

3 397 080 — 5 276 524
AED

849.27—1243.66 ft²

2BR

6 349 940 — 7 667 545
AED

1716.20—1783.15 ft²

3BR

9 558 800 — 20 669
576 AED

2375.49—3568.56 ft²

4BR

22 240 845 — 32 035
744 AED

4043.78—5432.76 ft²

5BR

51 188 438 — 53 869
313 AED

7814.91—8216.84 ft²

6BR

130 000 000 — 130 000
000 AED

19188.05—19188.05 ft²





Seahaven








project

Project Description

Nestled in the heart of Dubai Harbour, Sobha SeaHaven is a premium oceanfront destination offering ultra-luxurious 1-4 bedroom apartments. With exclusive amenities and lush landscaping, it serves as a retreat of opulence, tranquility and natural beauty. Located at the hub of a maritime gateway, this haven offers effortless access to the most exclusive destinations and embodies a lifestyle of unparalleled luxury.

Sobha SeaHaven stands majestically, offering breathtaking views of Dubai's iconic landmarks, including Ain Dubai, Palm Jumeirah, Dubai Harbour and the Marina skyline merging with the oceanic horizon. The location offers...

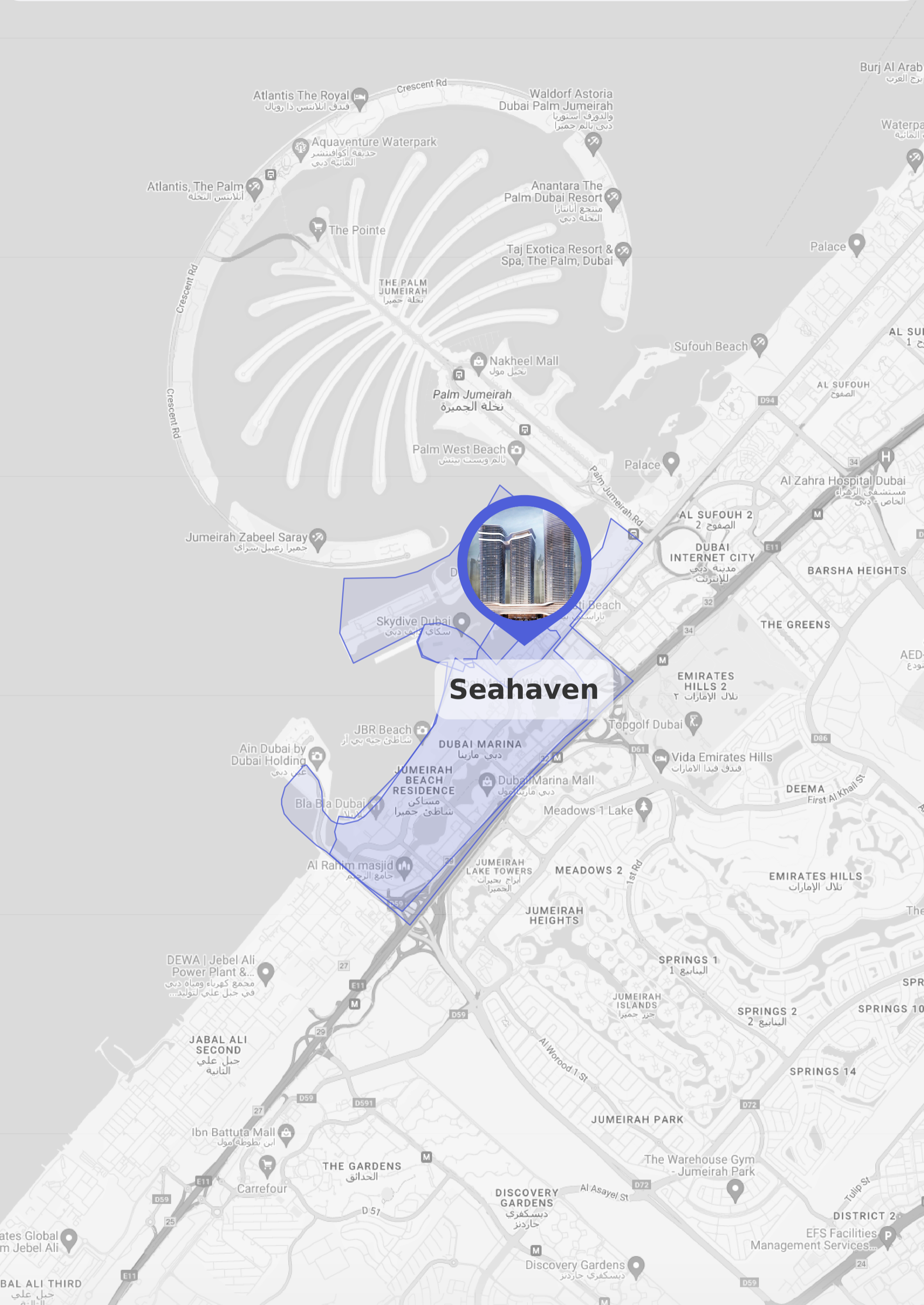
Project Amenities

-  Shared Pool
-  Security
-  Concierge Service
-  Pets Allowed
-  Lobby
-  Kids Play Area
-  Children's pool



Sobha

Developer



Seahaven

© Marsa Dubai, Dubai Marina, Dubai Harbour



Tower A

1 BEDROOM APARTMENT TYPE C (with powder room + balcony)

Apartment • 1 unit

5 276 524 AED



Total S

3628.94 ft²



Living S

3181.16 ft²



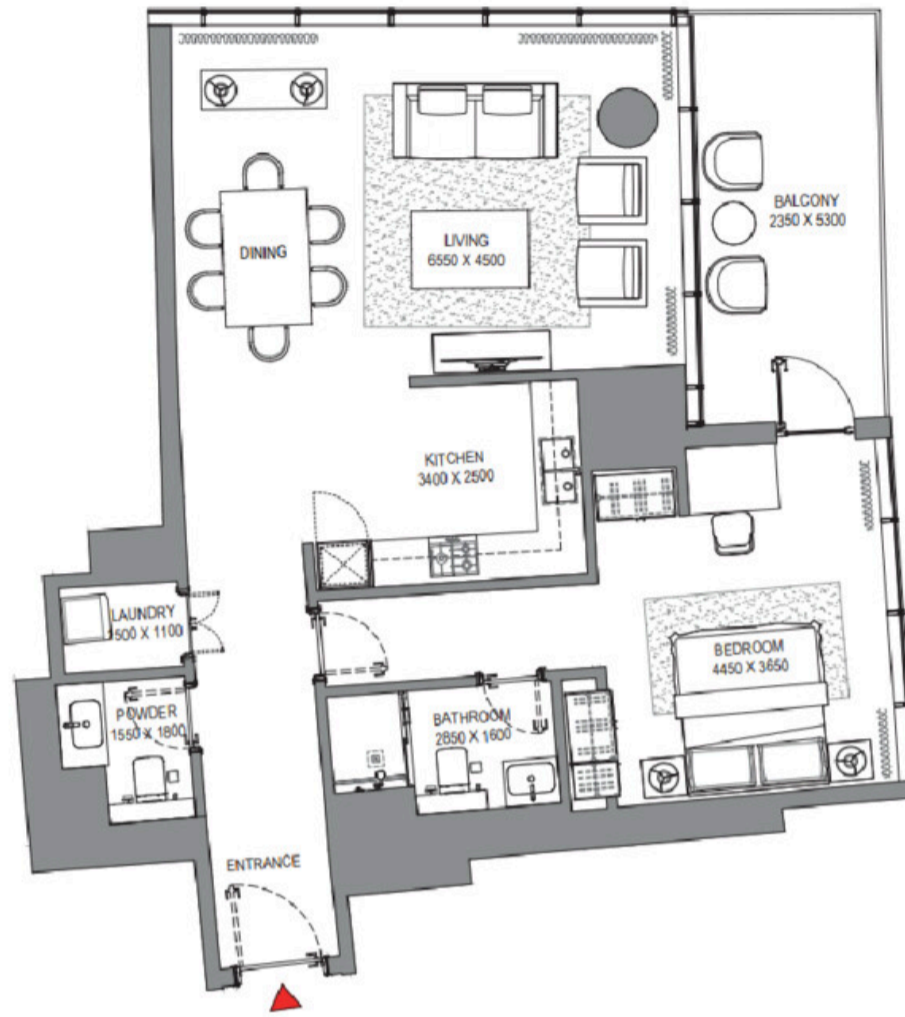
Bedrooms

1 BR



Balconies

1



Tower A

1 BEDROOM APARTMENT TYPE C (with powder room + balcony)

Apartment • 1 unit

5 276 524 AED



Total S

3693.42 ft²



Living S

3238.00 ft²



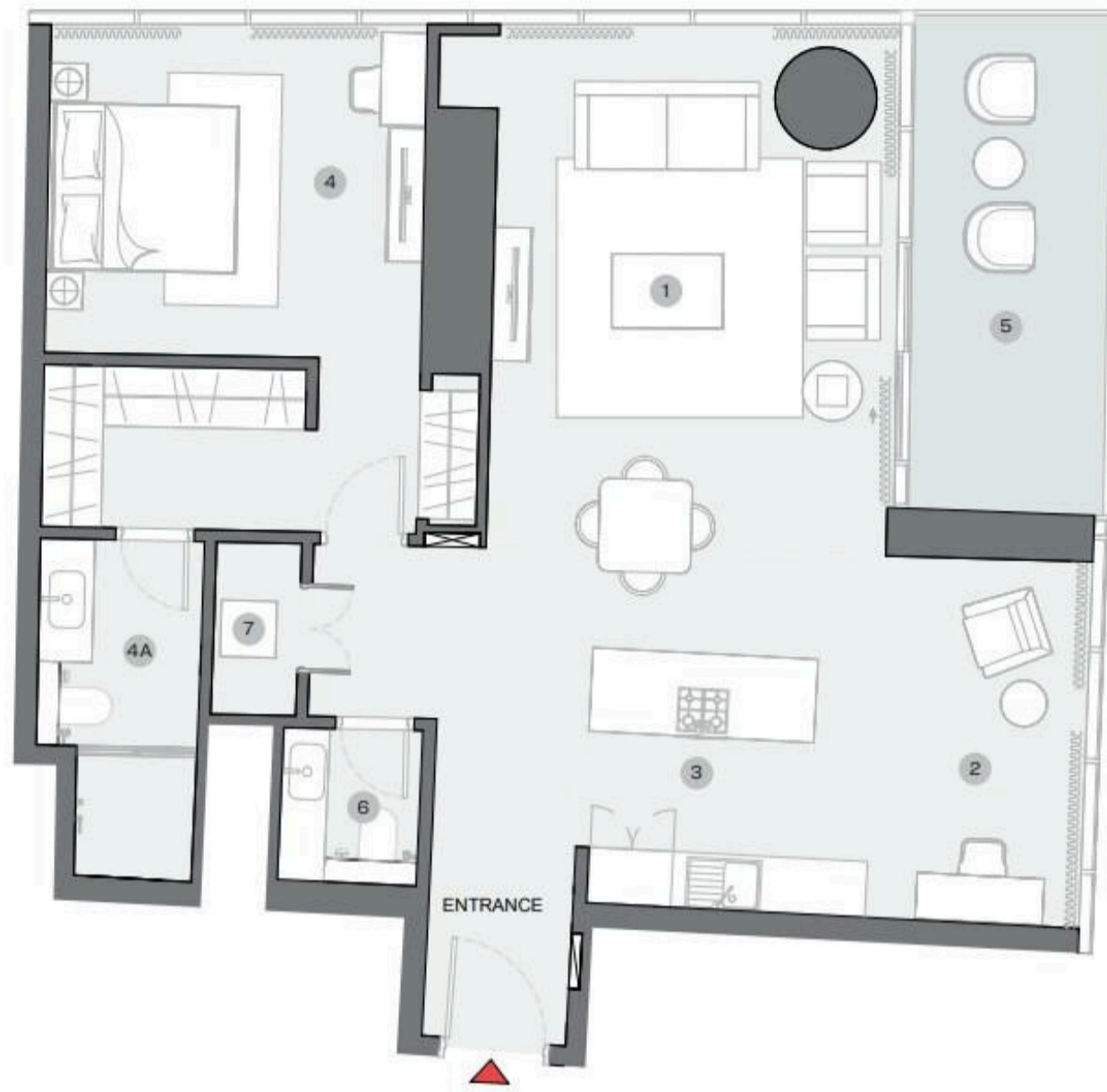
Bedrooms

1 BR



Balconies

1



Tower B

1 BEDROOM + STUDY APARTMENT TYPE D (with powder room + balcony)

Apartment • 20 units

4 719 790 — 5 092 856 AED

 Total S
1233.65 ft²

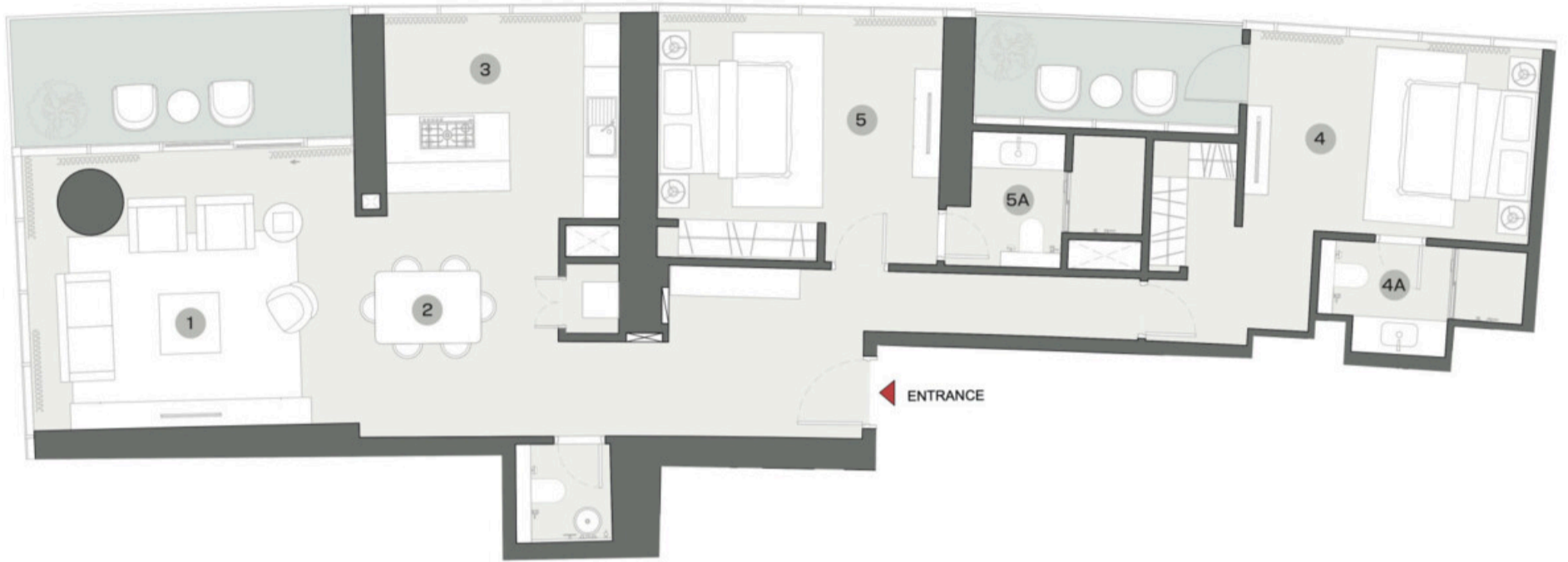
 Bedrooms
1 BR

 Finishing
Designer finishing

 Living S
1102.22 ft²

 Balconies
1

 Furnishing
Furnished



Tower B

2 BEDROOM APARTMENT TYPE A (with powder room + balcony)

Apartment • 8 units

7 248 267 — 7 667 545 AED

 Total S
1765.39 ft²

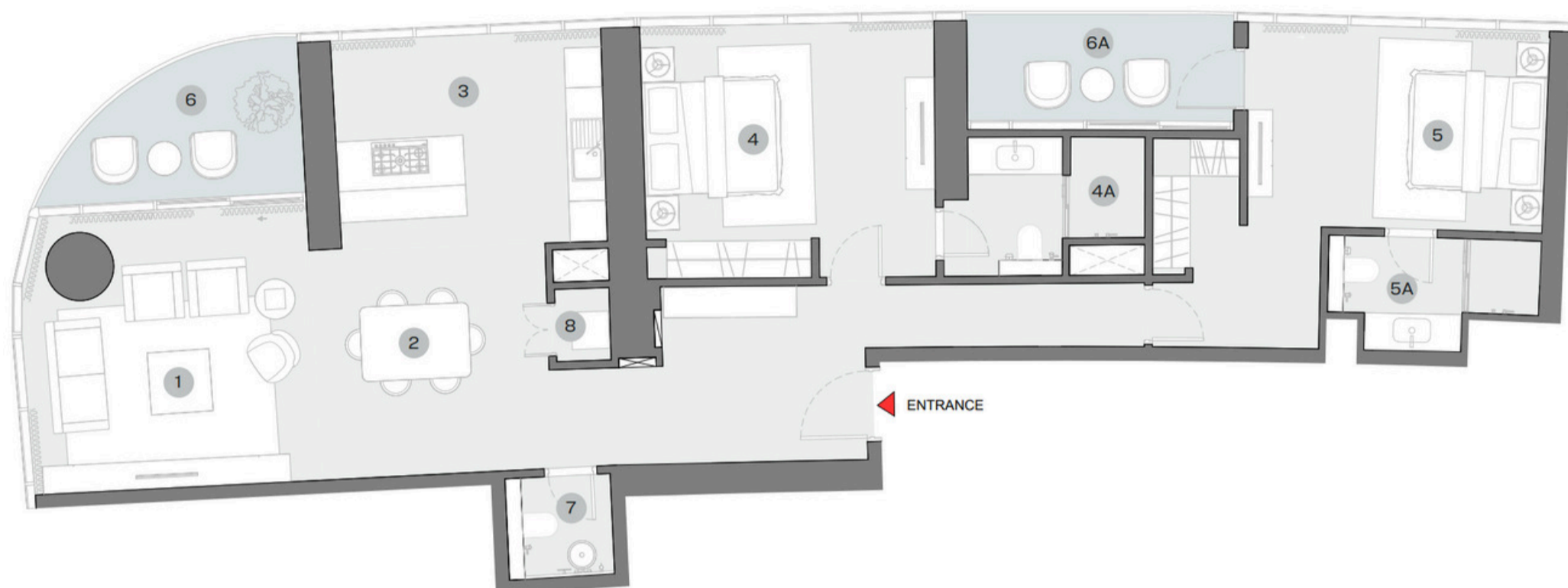
 Bedrooms
2 BR

 Finishing
Designer finishing

 Living S
1538.16 ft²

 Balconies
2

 Furnishing
Furnished



Tower C

2 Bedroom Type D (with powder room + balcony)

Apartment • 19 units

6 349 940 — 7 036 420 AED



Total S

1722.87 ft²



Living S

1534.61 ft²



Bedrooms

2 BR



Balconies

2



Tower B

3 BEDROOM APARTMENT TYPE A (with powder room + maid room + balcony)

Apartment • 3 units

15 718 200 — 16 415 330 AED

 Total S
3306.78 ft²

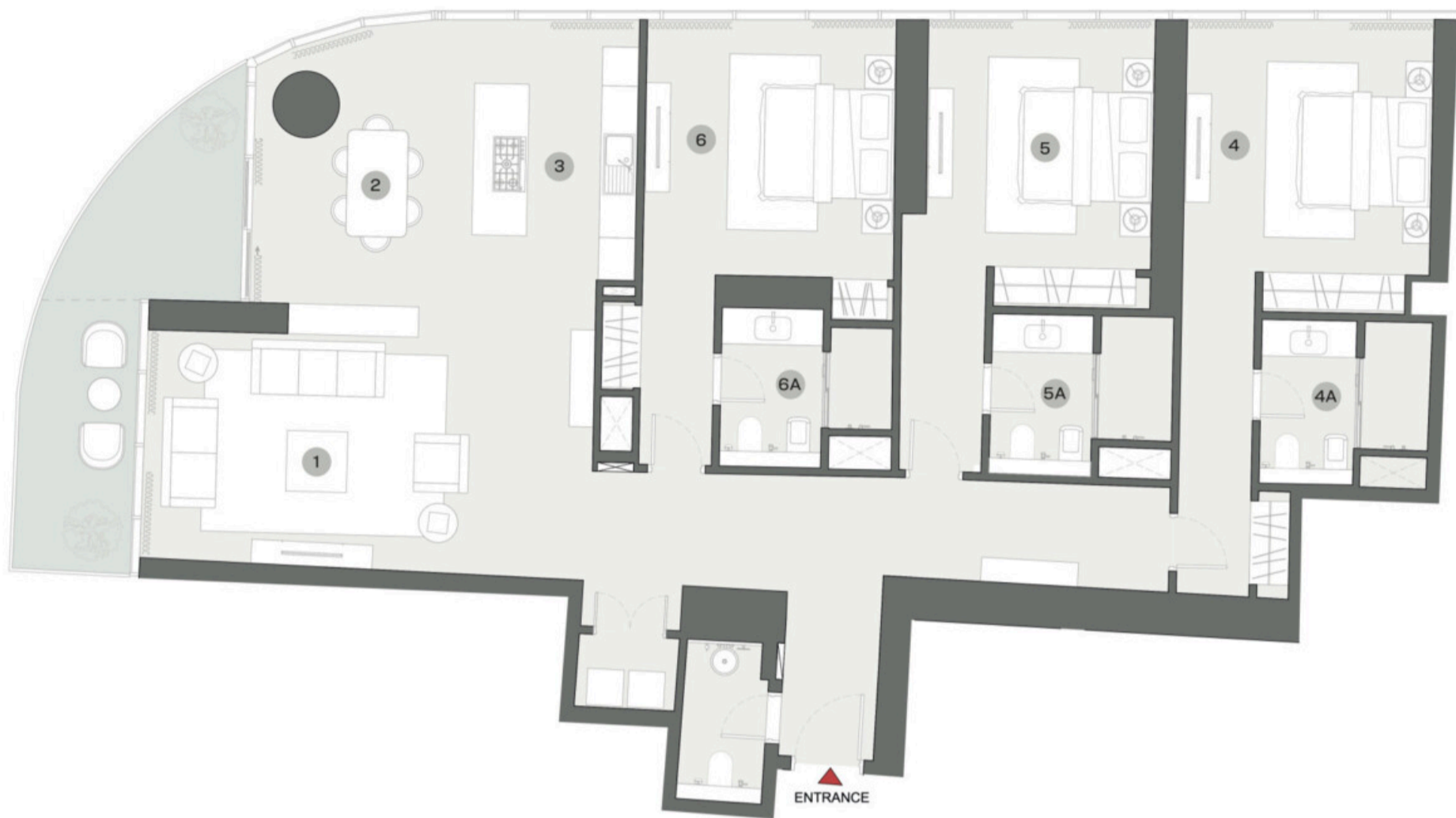
 Bedrooms
3 BR

 Finishing
Designer finishing

 Living S
2918.09 ft²

 Balconies
2

 Furnishing
Furnished



Tower B

3 BEDROOM APARTMENT TYPE B (with powder room + balcony)

Apartment • 4 units

10 927 254 — 11 064 426 AED



Total S

2354.39 ft²



Bedrooms

3 BR



Finishing

Designer finishing



Living S

2167.53 ft²



Balconies

1



Furnishing

Furnished



Tower C

3 Bedroom Type A (with powder room + balcony)

Apartment • 8 units

9 558 800 — 10 036 740 AED



Total S

2396.04 ft²



Living S

2124.69 ft²



Bedrooms

3 BR



Balconies

1



Tower A

4 BEDROOM APARTMENT TYPE A

4 units

27 999 680 — 31 406 896 AED



Bedrooms

4 BR



Balconies

3



Tower A

4 BEDROOM APARTMENT TYPE B

8 units

26 334 218 — 32 035 744 AED



Bedrooms

4 BR



Balconies

3

Payment plan 60/40



Example

Lets take a look how this payment plan will work with the cheapest unit in this project

1 BR • Apartment • 849.27 ft² • 3 397 080 AED

DOWN PAYMENT 137 033 AED fees included	816 449 AED
DURING CONSTRUCTION in 4 payments	1 358 832 AED
ON HANDOVER in 1 payment	1 358 832 AED
TOTAL SUM	3 671 146 AED